



ISAF Sailing World Cup Qingdao

SAILING INSTRUCTIONS

[DP] denotes a rule for which the penalty is at the discretion of the International Jury.

[NP] denotes that a breach of this rule will not be grounds for a protest by a boat.

[SP] denotes a rule for which a standard penalty may be applied by the race committee without a hearing"

1 RULES

- 1.1 The regatta will be governed by the rules as defined in *the 2013-2016 Racing Rules of Sailing* (RRS).
- 1.2 The prescriptions of the Chinese Yachting Association will not apply.
- 1.3 Decisions of the International Jury will be final as provided in RRS 70.5.
- 1.4 If there is a conflict between languages the English text will take precedence.
- 1.5 Appendix P, Special Procedures for Rule 42, will apply.
- 1.7 For medal races, ISAF Addendum Q, *Umpired Fleet Racing*, will apply and takes precedence over any conflicting instructions.
- 1.8 The ISAF SWC Equipment Regulations will apply.
- 1.9 The ISAF SWC Coach Boat Regulations will apply.

2 [DP] [NP] SAFETY REGULATIONS

- 2.1 The race committee will protest a boat for a breach of these safety regulations.
- 2.2 Competitors shall wear personal flotation devices at all times while afloat, except briefly while changing or adjusting clothing or personal equipment.
- 2.3 Boats not leaving the harbour for a scheduled race shall promptly notify the Race Office.
- 2.4 [SP] Before leaving to race on each scheduled racing day, a crew shall personally sign out on the required race committee form located at the launching ramp.
- 2.5 [SP] Within the protest time limit after returning ashore, a crew shall personally sign in on the required form.
- 2.6 A boat that retires from racing shall notify the race committee before leaving the racing area, or if that is not possible, shall notify the race office as soon as possible after returning ashore.
- 2.7 Boats retiring from racing in accordance with SI 2.6 shall complete a retirement declaration form at the race office before the protest time limit.
- 2.8 In accordance with NoR 14, Berthing, boats shall return to and remain in their assigned berths.
- 2.9 Boats not racing shall remain clear of boats that are racing and official boats.
- 2.10 When the race committee displays flag V with repetitive sounds, all official and support boats shall monitor VHF channel shown in at Addendum A for search and rescue instructions.
- 2.11 Boats that, for any reason, arrive ashore far from the harbour and that cannot reach their assigned berths by their own means, shall promptly notify the Race Office, by telephone at the following numbers: Zhang Lizhong: +13969880278

3 [DP] CODE OF CONDUCT

- 3.1 Competitors shall comply with any reasonable request from a regatta official.

4 COMMUNICATIONS WITH COMPETITORS

- 4.1 Notices to competitors will be posted on the official notice board located race management marquee. Notices will also be posted on the SWC Qingdao web site at <http://www.sailing.org/worldcup/onb.php>
Failure to post a notice at the SWC Qingdao web site will not be grounds for redress. This changes RRS 62.

- 4.2 When a visual signal is displayed over an area, event, or fleet flag, the signal applies only to that area, event or fleet. This changes the Race Signals preamble.
- 4.3 Signals ashore will be displayed on the flagpole located on the boat park.
- 4.4 When flag AP is displayed ashore, '1 minute' is replaced with "not less than 30 minutes" for areas Alpha and bravo and "not less than 45 minutes" for Area Charlie" in the race signal AP.
- 4.5 [SP] [DP] Boats shall not leave the shore until Flag D is displayed ashore. The warning signal will be made not less than 30 minutes" for areas Alpha and bravo and "not less than 45 minutes" for Area Charlie".

5 CHANGES TO SAILING INSTRUCTIONS

- 5.1 Any change to the format or schedule of races will be posted by 2030 on the day before it will take effect and any change to the sailing instructions will be posted before 0930 on the day it will take effect.
- 5.2 Any reassignment of events or fleets to course areas will be posted before 09:00 on the day it will take effect, or if flag AP is displayed ashore, 30 minutes before flag AP for that class or fleet is removed.
- 5.3 Any change to the sailing instructions will be approved by the Principal Race Officer and the ISAF Technical Delegate.

6 FORMAT OF RACING

- 6.1 The format for each Olympic event consists of an opening series and a medal race. The top ten finishers in the opening series of each event will advance to the medal race.
- 6.2 The medal race will be scheduled for each Olympic class with 3 or more opening series races completed.
- 6.3 Assignments to the medal race will be based on the ranking available at 0900 on the day of the medal race. The protest committee may extend the time limit.

7 SCHEDULE OF RACES

- 7.1 The total number of races scheduled is shown in SI Addendum C.
- 7.2 The daily race schedule and the scheduled time of the warning signal for the 1st race are shown in SI Addendum C.
- 7.3 Races not sailed on the scheduled day may be sailed on a following day at the discretion of the race committee.
- 7.4 The warning signal for each succeeding race will be made as soon as practicable.
- 7.5 To alert boats that a race or sequence of races will begin soon, the orange starting line flag will be displayed with one sound at least five minutes before a warning signal is made.
- 7.7 On the last scheduled day of racing, no warning signal will be made after 1600 h.

8 & 9 SPARE

10 COURSE AREAS

- 10.1 The course areas are shown in SI Addendum A.
- 10.2 Events are assigned to course areas as stated in SI Addendum C.
- 10.3 For the medal race, one race course area will be used. The location will be posted on the official notice board.

11 THE COURSES

The diagrams in SI Addendum B show the courses, the course designations, the approximate angles between legs, the order in which marks are to be passed, and the side on which each mark is to be left.

12 MARKS

- 12.1 Marks 1, 2, 3, and 4, or associated gate marks, will be as follows:

<u>Event</u>	<u>Marks 1, 2, 3, 4</u>	<u>New Mark</u>	<u>Inflatable Starting Line Mark, if any</u>	<u>Inflatable Finishing Line Mark, if any</u>
RS:X M & W	Red Cylinder	Pink Cylinder	Red Triangle	Red Triangle
Laser & Laser Radial	Yellow Cylinder	Pink Cylinder	Red Triangle	Red Triangle
470 M & W	Green Cylinder	Pink Cylinder	Red Triangle	Red Triangle

12.2 The starting and the finishing line marks may be race committee vessels or inflatable marks.

13 CLASS FLAGS

Class flags will be class insignia on the following background:

<u>Event</u>	<u>Class Insignia</u>	<u>Background Colour</u>
Men's One Person Dinghy	Laser Standard	White
Women's One Person Dinghy	Laser Radial	Light Blue
Men's Two Person Dinghy	470 M	White
Women's Two Person Dinghy	470 W	Light Blue
Men's Windsurfer	RS:X M	White
Women's Windsurfer	RS:X W	Light Blue

14 THE START

- 14.1 The starting line will be between a staff displaying an orange flag on the race committee vessel at the starboard end and either
- (a) the course side of the port-end inflatable starting mark, or
 - (b) a staff displaying an orange flag on the race committee vessel at the port end.
- 14.2 [DP] A buoy may be attached to the race committee starting boat anchor line just below keel depth. Boats shall not pass between this buoy and the race committee starting boat at any time. This buoy is part of the race committee starting boat ground tackle.
- 14.3 [DP] When a starting sequence is in progress, boats whose warning signal has not been made shall avoid the starting area. The starting area is defined as a rectangle 50 meters from the starting line and marks in all directions.
- 14.4 If flag U has been displayed as the preparatory signal, no part of a boat's hull, crew or equipment shall be in the triangle formed by the ends of the starting line and the first mark during the last minute before her starting signal. If a boat breaks this rule and is identified, she shall be disqualified without a hearing but not if the race is restarted or resailed or postponed or abandoned before the starting signal. This changes rule 26 *Starting Races* and RRS 63.1. When flag U is used as the preparatory signal rule 29.1 *Individual recall* does not apply. The scoring abbreviation for a flag U penalty is UFD. This changes A11 *Scoring Abbreviations*

15 COURSE CHANGES

- 15.1 To change the next leg of the course, the race committee will (a) lay a new mark, (b) move the finishing line, or (c) move the leeward gate. When a new mark is laid, the original mark will be removed as soon as possible. When in a subsequent change a new mark is replaced, it will be replaced by an original mark.
- 15.2 Courses will not be shortened. This changes RRS 32.

16 THE FINISH

The finishing line will be between a staff displaying an orange flag on the race committee vessel and either:

- (a) The course side of the nearby inflatable finishing mark, or

(b) a staff displaying an orange flag on the nearby race committee vessel.

17 TIME LIMITS AND TARGET TIMES

17.1 Time limits and target times for the opening series are as follows:

Class	Time Limit	Mark 1 Time Limit	Finish Window	Target Time
470, Laser Radial, Laser	75	25	15	50
RS:X	45	15	10	20-25

17.2 Time limits and target times for medal race are as follows:

Class	Time Limit	Mark 1 Time Limit	Finish Window	Target Time
470, Laser Radial, Laser	40	10	10	25
RS:X	40	None	5	20

17.3 If no boat has passed Mark 1 within the Mark 1 Time Limit the race will be abandoned.

17.4 Boats failing to finish within the time stated in the Finish Window after the first boat sails the course and finishes will be scored Did Not Finish. This changes RRS 35, A4 and A5.

18 & 19 SPARE

20 [DP] EQUIPMENT AND MEASUREMENT CHECKS

Equipment inspection will be conducted in accordance with the Equipment Regulations.

21 [DP] REPLACEMENT OF CREW

Substitution of competitors will not be allowed without prior written approval of the race committee and shall comply with any restrictions in the Notice of Race.

22 OFFICIAL BOATS

22.1 Official boats will be marked as follows:

Equipment Inspection – 'IM' Flag

Jury/Judges – 'IJ' Flag

Media – 'Media' Flag

Organizers/VIP – 'VIP' Flag

Race Committee – 'RC' Flag

Principal Race Officer – 'PRO Flag'

Rescue or Course Marshals – 'Marshall' Flag

ISAF TV – 'ISAF TV' Flag

22.2 Actions by official boats or helicopters shall not be grounds for requesting redress by a boat. This changes RRS 60.1(b).

23 SUPPORT AND SPECTATOR BOATS

23.1 Addendum D - Coach Boat Regulations shall apply to all support boats.

23.2 Addendum D - Coach Boat Regulations Parts 4 and 5 shall also apply to spectator boats.

24 [DP] [NP] IDENTIFICATION AND ADVERTISING WHILE RACING

24.1 Each day, the first, second and third boats in series ranking at the beginning of the day shall display a yellow, blue and red bib on the crew respectively. In addition, the organizing authority may require a coloured dot to be applied to the mainsail. The organizing authority will supply the bibs and coloured dots, and instructions for their use.

- 24.2 Boats shall display required event sponsor advertising. The organizing authority will supply the advertising and instructions for their use.

25 SCORING

- 25.1 The Low Point System shall apply to all races, except that RRS A4.1 is changed so that the points scored in medal races are doubled.
- 25.2 A boat's score shall be calculated in accordance with RRS A2, except there shall be no excluded score in the medal stage.
- 25.3 When fewer than three opening series races have been completed, a boat's series score will be the total of the race scores. When three or more opening series races have been completed, a boat's score will be the total of her race scores excluding her worst score.
- 25.3 A boat starting later than 4 minutes after her starting signal will be scored Did Not Start. This changes RRS A4 and A5.
- 25.4 RRS A4.2 is changed so that those scores are based on the number of boats assigned to the opening series for the opening series or the boats assigned to the medal race for medal races.
- 25.5 Three races are required to be completed to constitute a regatta.
- 25.6 The boats competing in the Medal Stage shall be scored highest in the regatta. This may not apply to a boat disqualified under RRS 5 or RRS 69.
- 25.7 RRS B8 is deleted. RRS A8 is changed as follows:
- 25.7.1 For boats competing in a medal race, ties in the regatta score are broken by the medal race score.
- 25.7.2 Ties in a medal race are broken by applying RRS A8 to the opening series scores.
- 25.8 A boat assigned to compete in the medal race shall make a genuine effort to start, sail the course and finish. The penalty for a breach of this instruction will be ranking the boat tenth in the regatta. If there are two such boats, they will be ranked ninth and tenth, in order of their opening-series ranks, and so on. This changes RRS A2.
- 25.9 To request correction of an alleged error in posted race or series results, a boat may complete a scoring enquiry form available at the race office.

26 PROTESTS, PENALTIES AND REQUESTS FOR REDRESS

- 26.1 Protest forms are available at the race office. Protests and requests for redress or reopening shall be delivered there within the appropriate time limit.
- 26.2 For each fleet, the protest time limit is 60 minutes after the last boat has finished the last race of the day except for on Area Charlie where the protest time limit is 90 minutes or the race committee signals no more racing today (whichever is later).
- 26.3 Notices will be posted within 30 minutes of the protest time limit to inform competitors of hearings in which they are parties or named as witnesses. Hearings will be held in the protest room, located at the race management area beginning at the time posted. Hearings may be scheduled to begin up to 30 minutes before the end of protest time.
- 26.4 Notices of protests by the race committee or protest committee will be posted to inform boats under RRS 61.1(b).
- 26.5 A list of boats that have been penalized under Appendix P for breaking RRS 42 will be posted.
- 26.6 Penalties for breaches of NoR 21 (Insurance), RRS 55, Equipment Regulations, class rules, or rules in the Notice of Race and Sailing Instructions marked [DP], are at the discretion of the protest committee. A boat may accept a discretionary penalty before a hearing concerning the same incident by completing a form available at the jury office.
- 26.7 Breaches of rules in the SIs marked [NP] will not be grounds for a protest by a boat. This changes RRS 60.1(a).
- 26.8 For breaches of the SIs marked [SP], the race committee may apply a standard penalty without a hearing. A list of these breaches and the associated standard penalties will be posted on the Official Notice Board. However, the race committee may protest a boat when they consider the standard penalty to be inappropriate. This changes RRS 63.1 and Appendix A5.

26.9 On the last day of the opening series, or a stage of an event, or on the last scheduled day of racing, a request for reopening a hearing shall be delivered

(a) Within the protest time limit if the requesting party was informed of the decision on the previous day;

(b) No later than 30 minutes after the requesting party was informed of the decision on that day.

This changes RRS 66.

26.10 On the last day of the opening series, or on the last scheduled day of racing, a request for redress based on a jury decision shall be delivered no later than 30 minutes after the decision was posted. This changes RRS 62.2.

27 [DP] RADIO COMMUNICATIONS

A boat shall neither make radio transmissions while racing nor receive radio communications not available to all boats, except in an emergency or when using equipment provided by the race committee. This restriction also applies to mobile telephones.

28 [DP] TRASH DISPOSALS

As sailors, we seek to protect and restore our oceans and coastal waters. See RRS 55. Trash may be placed aboard support and race committee boats.

29 PRIZES

29.1 Medals will be awarded to the top 3 boats in each event.

29.2 Prizes will be awarded in accordance with the Notice of Race.

30 [DP] [SP] Positioning Equipment

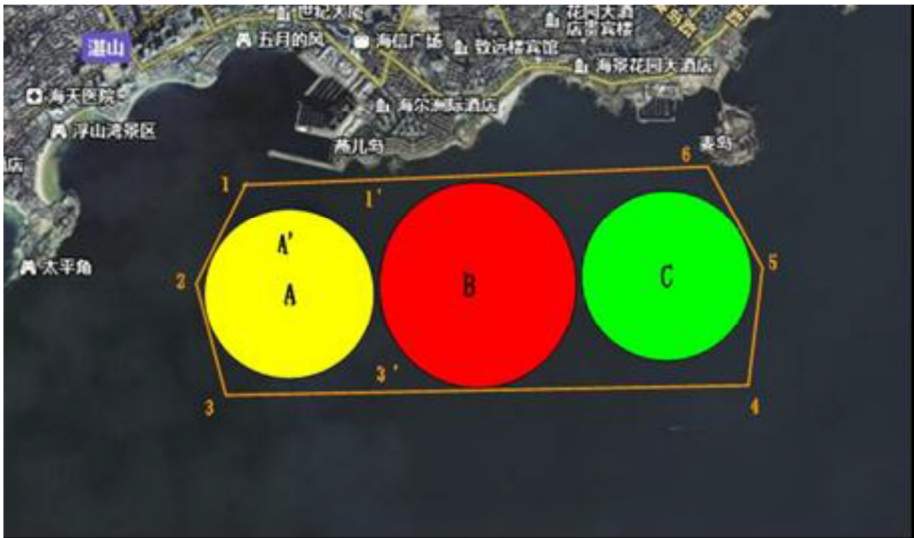
30.1 Before competition/before racing

A tracking socket will be supplied during registration to all competitors. Competitors shall securely mount the tracking socket to their boat as per the supplied instructions. Competitors shall collect a tracking module from the desk located on the launching ramp which must be securely fitted to the tracking socket before racing each day.

30.2 Return to shore

Competitors shall return the tracking module to the desk in the boat park each day within the protest time limit. After their last race of the regatta, competitors shall also return the tracking socket within the protest time limit.

ADDENDUM A: COURSE AREAS

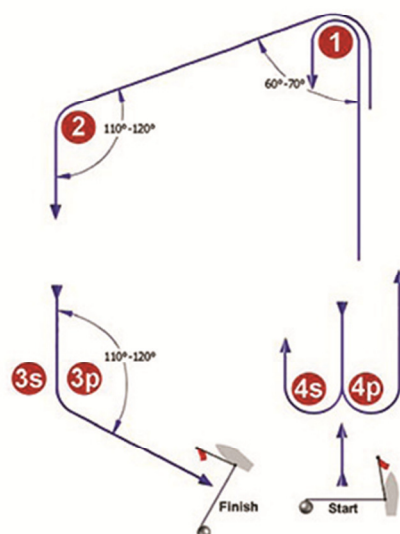


ALPHA	BRAVO	CHARLIE
Area Center :	Area Center :	Area Center :
36°02.40' N	36°02.40' N	36°02.50' N
120°23.00' E	120°24.50' E	120°26.00' E

VHF CHANNELS	
COURSE AREA	VHF CHANNEL
ALPHA	69
BRAVO	70
CHARLIE	72

ADDENDUM B – COURSE ILLUSTRATIONS

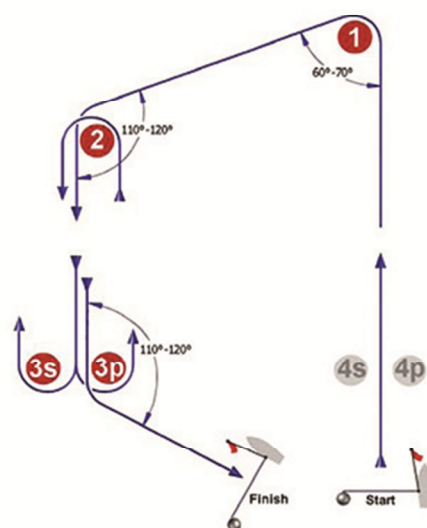
I



Course: Inner Trapezoid

Signal	Mark Rounding Order
I2	Start - 1 - 4s/4p - 1 - 2 - 3p - Finish
I3	Start - 1 - 4s/4p - 1 - 4s/4p - 1 - 2 - 3p - Finish
I4	Start - 1 - 4s/4p - 1 - 4s/4p - 1 - 4s/4p - 1 - 2 - 3p - Finish

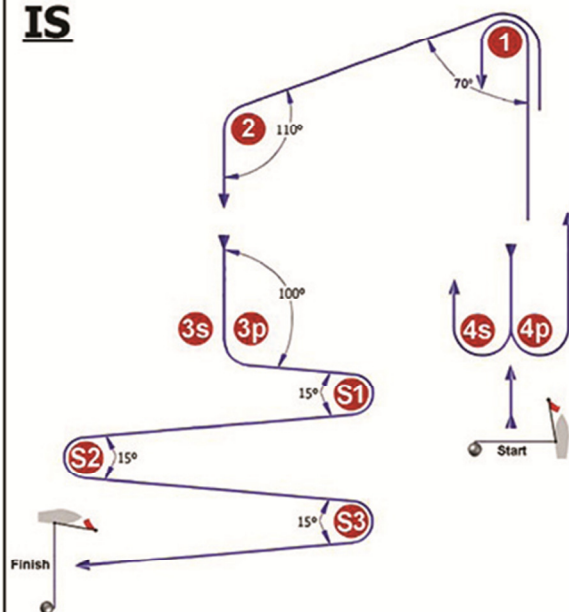
O



Course: Outer Trapezoid

Signal	Mark Rounding Order
O2	Start - 1 - 2 - 3s/3p - 2 - 3p - Finish
O3	Start - 1 - 2 - 3s/3p - 2 - 3s/3p - 2 - 3p - Finish
O4	Start - 1 - 2 - 3s/3p - 2 - 3s/3p - 2 - 3s/3p - 2 - 3p - Finish

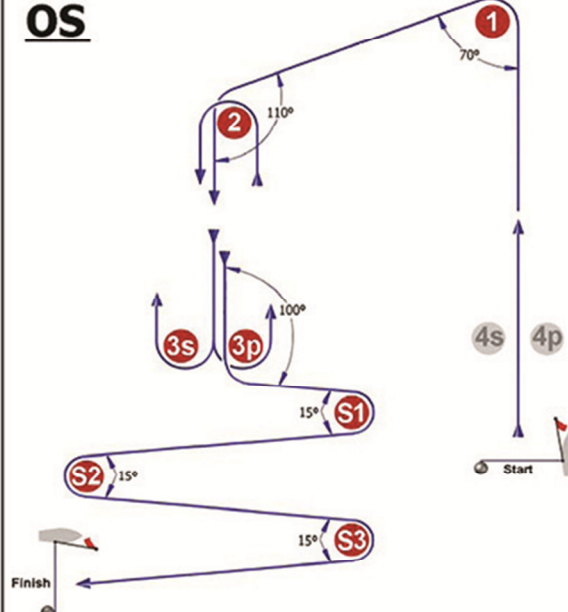
IS



Course: Inner Slalom

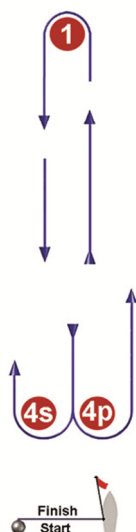
Signal	Mark Rounding Order
IS2	Start - 1 - 4s/4p - 1 - 2 - 3p - S1 - S2 - S3 - Finish
IS3	Start - 1 - 4s/4p - 1 - 4s/4p - 1 - 2 - 3p - S1 - S2 - S3 - Finish
IS4	Start - 1 - 4s/4p - 1 - 4s/4p - 1 - 4s/4p - 1 - 2 - 3p - S1 - S2 - S3 - Finish

OS

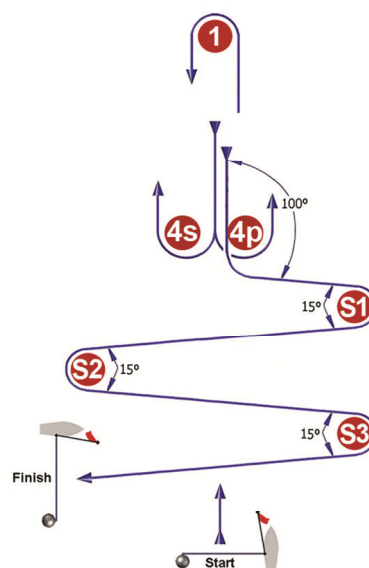


Course: Outer Slalom

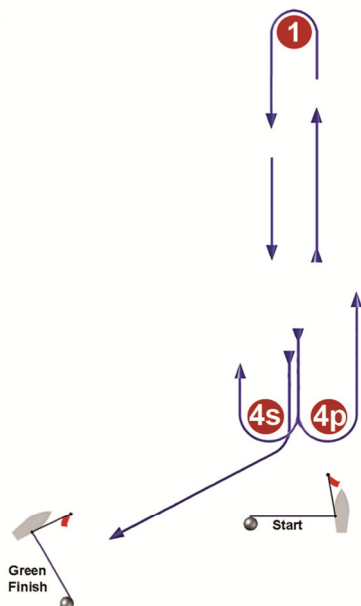
Signal	Mark Rounding Order
OS2	Start - 1 - 2 - 3s/3p - 2 - 3p - S1 - S2 - S3 - Finish
OS3	Start - 1 - 2 - 3s/3p - 2 - 3s/3p - 2 - 3p - S1 - S2 - S3 - Finish
OS4	Start - 1 - 2 - 3s/3p - 2 - 3s/3p - 2 - 3s/3p - 2 - 3p - S1 - S2 - S3 - Finish

L**Course: Windward/Leeward**

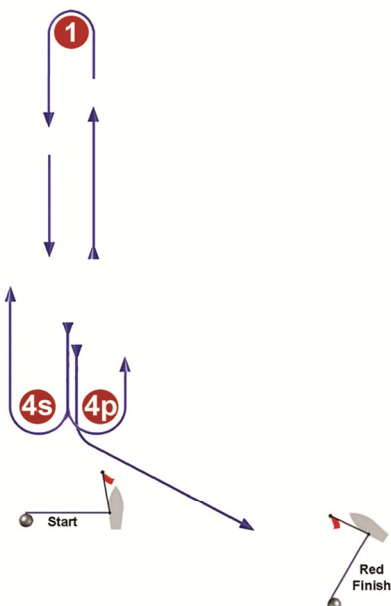
Signal	Mark Rounding Order
L2	Start - 1 - 4s/4p - 1 - Finish
L3	Start - 1 - 4s/4p - 1 - 4s/4p - 1 - Finish
L4	Start - 1 - 4s/4p - 1 - 4s/4p - 1 - 4s/4p - 1 - Finish

LS**Course: Windward/Leeward With Slalom Finish**

Signal	Mark Rounding Order
LS2	Start - 1 - 4s/4p - 1 - 4p - S1 - S2 - S3 - Finish
LS3	Start - 1 - 4s/4p - 1 - 4s/4p - 1 - 4p - S1 - S2 - S3 - Finish
LS4	Start - 1 - 4s/4p - 1 - 4s/4p - 1 - 4s/4p - 1 - 4p - S1 - S2 - S3 - Finish

LG**Course: Windward/Leeward**

Signal	Mark Rounding Order
LG2	Start - 1 - 4s/4p - 1 - 4s - Finish
LG3	Start - 1 - 4s/4p - 1 - 4s/4p - 1 - 4s - Finish
LG4	Start - 1 - 4s/4p - 1 - 4s/4p - 1 - 4s/4p - 1 - 4s - Finish

LR**Course: Windward/Leeward**

Signal	Mark Rounding Order
LR2	Start - 1 - 4s/4p - 1 - 4p - Finish
LR3	Start - 1 - 4s/4p - 1 - 4s/4p - 1 - 4p - Finish
LR4	Start - 1 - 4s/4p - 1 - 4s/4p - 1 - 4s/4p - 1 - 4p - Finish

ADDENDUM C: SCHEDULE OF RACE

Event	Area	Total Races	MON 13	TUE 14		WED 15		THU 16		FRI 17		SAT 18	
			Practice Race	time	#	time	#	time	#	time	#	time	#
RS:X M	TBA	13	13:00	1300	3	1300	3	1300	3	1300	3	TBA	1
RS:X W	TBA	13		1300	3	1300	3	1300	3	1300	3	TBA	1
470 M	TBA	9		1300	2	1300	2	1300	2	1300	2	TBA	1
470 W	TBA	9		1300	2	1300	2	1300	2	1300	2	TBA	1
Laser	TBA	9		1300	2	1300	2	1300	2	1300	2	TBA	1
Laser radial	TBA	9		1300	2	1300	2	1300	2	1300	2	TBA	1

ADDENDUM D - Coach Boat Regulations

1. General

- 1.1. These Coach Boat Regulations shall apply from 00:00 on Saturday the 11th of October until 00:00 on Sunday the 19th of October.
- 1.2. For the purposes of these regulations, a coach boat includes any boat that is under the control or direction of a person who is or may provide physical or advisory support to an athlete, including the gathering of data that may be used at a later time.
- 1.3. The Organizing Authority may inspect boats at any time to ensure that they comply with these regulations, and the person responsible for the boat shall facilitate such inspection.
- 1.4. An alleged breach of any of these regulations may be referred to the International Jury for a hearing. As a result of the hearing, the International Jury may instruct the Organizing Authority to withdraw accreditation and access rights from the driver or person in charge, with or without the option of substitution, either for a specified period or for the remainder of the competition. Note also, action may be taken under RRS 69.
- 1.5. The Organizing Authority may change these regulations at any time. Any changes will be posted on the Official Noticeboard and circulated to team leaders.
- 1.6. The Organizing Authority may, at its discretion, refuse to register coach boats not deemed to be suitable.
- 1.7. Coach boats and designated drivers shall be registered at the Regatta Office either before leaving the venue by water for the first time or by 18:00 on the day before the first race of the Event that it is supporting, whichever is earlier.
 - 1.7.1. Each boat shall be insured with valid third-party liability insurance with a minimum coverage of € 1.500.000,00€ (or equivalent) per incident.
 - 1.7.2. Only an accredited person may be a designated driver.
 - 1.7.3. The person registering the support boat shall confirm that:
 - a valid insurance certificate showing proof of third-party liability coverage as required by 1.7.1 has been obtained;
 - each designated driver has a motorboat driving license recognized by a national authority appropriate to that boat; and
 - anyone who will be using a radio has an appropriate radio operation license recognized by a national authority.
- 1.8. Coach boats shall be marked with the applicable national sail letters (see RRS G1.1) clearly displayed on both sides of the boat in strongly contrasting colours at all times while afloat. The minimum height for the letters shall be 200mm. The letters will not be provided by the Organizing Authority.

2. Sailing Venue

- 2.1. Coach boats shall use the designated slipway/area for launching. Once launched, trailers shall be moved immediately to the trailer park or as otherwise directed by the Organizing Authority.
- 2.2. Only registered coach boats will be allowed into the sailing venue.
- 2.3. When not in use, coach boats shall be appropriately berthed at the sailing venue in the allocated areas for the entire time that these regulations apply.
- 2.4. Coach boats shall not use the dinghy launching slipways or keelboat pontoons for any purpose whatsoever, including mooring, launching and retrieval, and loading and unloading of equipment.

3. Safety

- 3.1. Coach boats shall carry on board:
 - a) life jackets / buoyancy aid for all passengers and the driver

- b) first-aid kit;
- c) VHF radio;
- d) device for making a sound signal;
- e) compass;
- f) adequate anchor and tackle for conditions and depth;
- g) tow rope (minimum 15m long and 10mm thick);
- h) operational engine kill cord (also known as a safety lanyard or automatic engine immobilizer);
- i) hand pump or bailer
- j) knife; and
- k) any additional safety equipment required by local maritime law.

It is recommended that life jackets be worn at all times when afloat. It is strongly recommended that the kill cord is used at all times when the engine is running.

- 3.2. The maximum plated / certified passenger limits for the boat shall never exceed.
- 3.3. Team leaders are responsible for overseeing the safe operations of their boats on the water, including knowledge of who is afloat and ensuring their safe return to the venue.
- 3.4. At all times, the registered driver(s) of a coach boat shall comply with directions given by a race official. In particular, this includes assisting in rescue operations when requested to do so.
- 3.6. Support boats shall comply with local harbour and marina regulations, including speed limits.

4. General restrictions

- 4.1. The registered driver(s) of a coach boat will be responsible for the control of the boat at all times and will be held responsible for any inappropriate behaviour, dangerous actions or improper practices, or actions affecting the fairness or safety of competition.
- 4.2. Coach boats shall not leave any device, piece of equipment, buoy, marker or similar item permanently in the water. Temporary use of floating objects is allowed for current measurement. These objects shall be removed as soon as the measurement has been taken.
- 4.3. Coach boats should take particular care to minimize their wash when transiting the course areas.

5. Race Area Restrictions

- 5.1. Coach Boats shall not be positioned:
 - 5.1.1 closer than 50 meters of any boat racing.
 - 5.1.2 within 50 meters of the starting line and marks from the time of the preparatory signal until all boats have left the starting area or the race committee signals a postponement, general recall or abandonment.
 - 5.1.3 between any boat racing and the next mark of the course.
 - 5.1.4 between the inner and outer trapezoid courses when boats are racing on both courses.
 - 5.1.5 within 50 meters of any mark of the course while boats are in the vicinity of that mark.
 - 5.1.6 within 50 meters of the finishing line and marks while boats are finishing.
- 5.2 In addition, coach boats that are motoring above 5 knots shall remain at least 150 meters from any boat racing.
- 5.3 Additional restrictions apply to medal races and will be posted on the official notice board.

ADDENDUM Q

UMPIRED FLEET RACING

This addendum has been approved by ISAF in accordance with rule 86.2 and ISAF Regulation 28.1.3.

Version: January 21, 2013

These sailing instructions change the definition Proper Course, and rules 20, 28.2, 44, 60, 61, 62, 63, 64.1, 65, 66, 70, 78.3 and B5.

Q1 CHANGES TO RACING RULES

Additional changes to rules are made in instructions Q2, Q3, Q4, and Q5.

Q1.1 Changes to the Definitions and the Rules of Part 2 and Part 4

- (a) Add to the definition Proper Course: 'A boat taking a penalty or maneuvering to take a penalty is not sailing a *proper course*.'
 - (b) When rule 20 applies, the following arm signals are required in addition to the hails:
 - (1) for 'Room to tack', repeatedly and clearly pointing to windward; and
 - (2) for 'You tack', repeatedly and clearly pointing at the other boat and waving the arm to windward.
- Instruction Q1.1 (b) does not apply to boards.

Q1.2 Changes to Rules Involving Protests, Requests for Redress, Penalties and Exoneration

- (a) The first sentence of rule 44.1 is replaced with: 'A boat may take a One-Turn Penalty when she may have broken a rule of Part 2 (except rule 14 when she has caused damage or injury) or rule 31 or 42 while *racing*.'
- (b) For boards, the One-Turn Penalty is one 360° turn with no requirement for a tack or a gybe.
- (c) Rule 60.1 is replaced with 'A boat may protest another boat or request redress provided she complies with instructions Q2.1 and Q2.4.'
- (d) The third sentence of rule 61.1(a) and all of rule 61.1(a)(2) are deleted. Rule B5 is deleted.
- (e) Rules 62.1(a), (b) and (d) are deleted. In a race where this addendum applies, there shall be no scoring adjustments for redress given under any of these rules for a previous race.
- (f) Rule 64.1(a) is changed so that the provision for exonerating a boat may be applied by the umpires without a hearing, and it takes precedence over any conflicting instruction of this addendum.
- (g) Rules P1 to P4 shall not apply.

Q2 PROTESTS AND REQUESTS FOR REDRESS BY BOATS

- Q2.1** While racing, a boat may protest another boat under a rule of Part 2 (except rule 14) or under rule 31 or 42; however, a boat may only protest under a rule of Part 2 for an incident in which she was involved. To do so she shall hail 'Protest' and conspicuously display a red flag at the first reasonable opportunity for each. She shall remove the flag before, or at the first reasonable opportunity after a boat involved in the incident has taken a penalty voluntarily or after an umpire's decision. However, a board need not display a red flag.
- Q2.2** A boat that protests as provided in instruction Q2.1 is not entitled to a hearing. Instead, a boat involved in the incident may acknowledge breaking a rule by taking a One-Turn Penalty as described in rule 44.2. If the protested boat does not take a penalty voluntarily, an umpire will decide whether to penalize any boat and signal the decision as provided in instruction Q3.1.
- Q2.3** At the finishing line, the race committee will inform the competitors about each boat's finishing place or scoring abbreviation. After this has been done for all boats, the race committee will promptly display flag B with one sound. Two minutes later flag B will be removed with one sound.
- Q2.4** A boat intending to
 - (a) protest another boat under a rule other than instruction Q3.2 or Q4.2(a), or a rule listed in instruction Q2.1,

- (b) protest another boat under rule 14 if there was contact that caused damage or injury, or
- (c) request redress

shall hail the race committee before or during the display of flag B. The same time limit applies to protests under instructions Q5.4 and Q5.5. The protest committee may extend the time limit if there is good reason to do so.

- Q2.5** The race committee will promptly inform the protest committee about any protests or requests for redress made under instruction Q2.4.

Q3 UMPIRE SIGNALS AND IMPOSED PENALTIES

- Q3.1** An umpire will signal a decision as follows:

- (a) A green and white flag with one long sound means 'No penalty.'
- (b) A red flag with one long sound means 'A penalty is imposed or remains outstanding.' The umpire will hail or signal to identify each such boat.
- (c) A black flag with one long sound means 'A boat is disqualified.' The umpire will hail or signal to identify the boat disqualified.

- Q3.2** (a) A boat penalized under instruction Q3.1(b) shall take a One-Turn Penalty as described in rule 44.2.
(b) A boat disqualified under instruction Q3.1(c) shall promptly leave the course area.

Q4 PENALTIES AND PROTESTS INITIATED BY AN UMPIRE; ROUNDING OR PASSING MARKS

- Q4.1** When a boat

- (a) breaks rule 31 and does not take a penalty,
- (b) breaks rule 42,
- (c) gains an advantage despite taking a penalty,
- (d) deliberately breaks a rule,
- (e) commits a breach of sportsmanship, or
- (f) fails to comply with instruction Q3.2 or to take a penalty when required to do so by an umpire,

an umpire may penalize her without a protest by another boat. The umpire may impose one or more One-Turn Penalties to be taken as described in rule 44.2, each signalled in accordance with instruction Q3.1(b), or disqualify her under instruction Q3.1(c), or report the incident to the protest committee for further action. If a boat is penalized under instruction Q4.1(f) for not taking a penalty or taking a penalty incorrectly, the original penalty is cancelled.

- Q4.2** (a) A boat shall not round or pass a mark on the wrong side. If she does so, she may correct her error as provided in rule 28.2 only if she does so before she rounds or passes the next mark or finishes.
(b) When a boat breaks instruction Q4.2(a) and fails to correct her error before rounding or passing the next mark or finishing, an umpire may disqualify her under instruction Q3.1(c).

- Q4.3** An umpire who decides, based on his own observation or a report received from any source, that a boat may have broken a rule, other than instruction Q3.2 or Q4.2(a) or a rule listed in instruction Q2.1, may inform the protest committee for its action under rule 60.3. However, he will not inform the protest committee of an alleged breach of rule 14 unless there is damage or injury.

Q5 PROTESTS; REQUESTS FOR REDRESS OR REOPENING; APPEALS; OTHER PROCEEDINGS

- Q5.1** No proceedings of any kind may be taken in relation to any action or non-action by an umpire.

- Q5.2** A boat may not base an appeal on an alleged improper action, omission or decision of the umpires or the protest committee. In rule 66 the third sentence is changed to 'A party to the hearing may not ask for a reopening.'

- Q5.3** (a) Protests and requests for redress need not be in writing.
(b) The protest committee may take evidence and conduct the hearing in any way it considers appropriate and may communicate its decision orally.

(c) If the protest committee decides that a breach of a rule has had no effect on the outcome of the race, it may impose a penalty of points or fraction of points or make another arrangement it decides is equitable, which may be to impose no penalty.

Q5.4 The race committee will not protest a boat, except following a report under rule 43.1(c) or 78.3.

Q5.5 The protest committee may protest a boat under rule 60.3. However, it will not protest a boat for breaking instruction Q3.2 or Q4.2(a), a rule listed in instruction Q2.1, or rule 14 unless there is damage or injury.